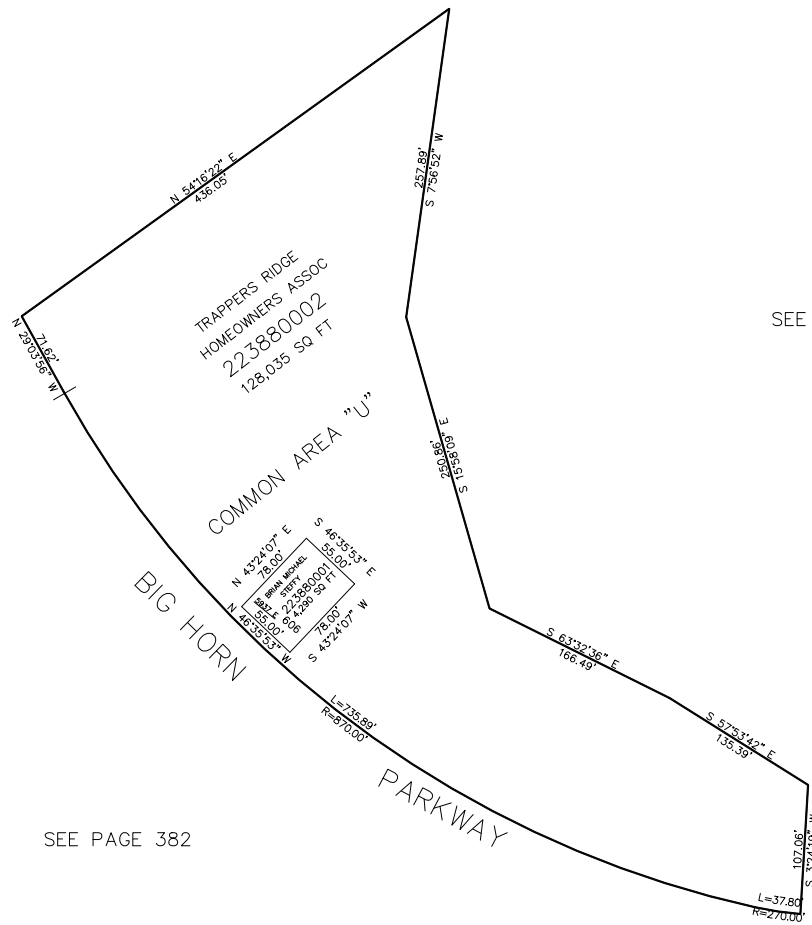


PART OF THE NW. 1/4, OF SECTION 26, T.7N., R.1E., S.L.B. & M.
TRAPPERS RIDGE AT WOLF CREEK P.R.U.D. PHASE 6 2ND AMENDMENT

IN WEBER COUNTY

TAXING UNIT: 203

SCALE 1" = 80'



10' UTILITY & DRAINAGE EASEMENTS EACH
 SIDE OF PROPERTY LINES AS INDICATED
 BY DASHED LINES EXCEPT AS OTHERWISE
 SHOWN.

FOR COMPLETE ENG DATA SEE
 ORIGINAL DEDICATION PLAT IN
 BOOK 89, PAGE 41 OF RECORDS.